

Gearbox for a Changing World

Planetary Gearbox

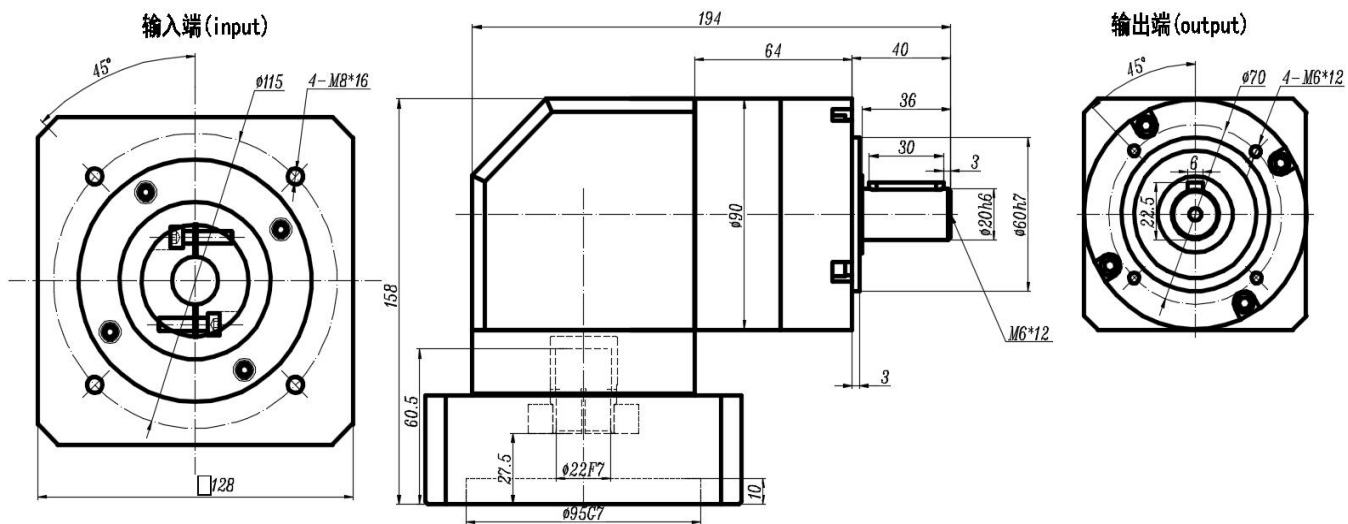
WPL Precision Series

Specifications

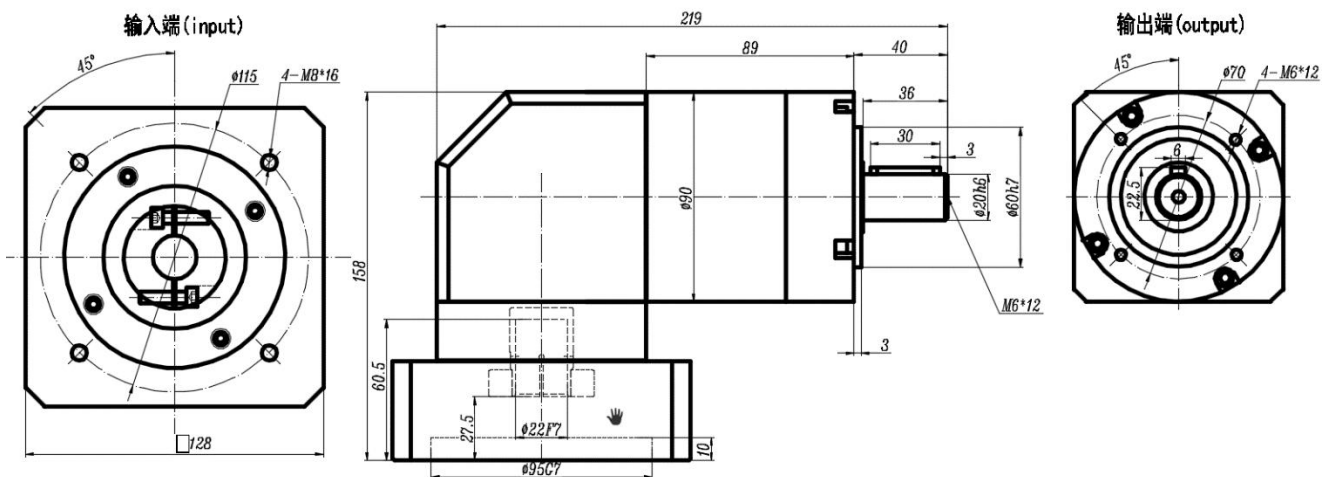
Items	Unit	Stage	Ratio	60	90	120		
Rated Output Torque	N-m	1	3	15	55	105		
			4	30	100	230		
			5	27	95	220		
			7	20	80	160		
			10	9	50	100		
		2	16	35	106	260		
			20	35	106	260		
			25	30	100	245		
			35	30	100	245		
			40	35	106	260		
			50	30	90	245		
			70	22	60	195		
100	10	60	110					
Max. Acceleration Torque	N-m	1,2	3 ~ 100	2 times the Rated Output Torque				
Max. Output Torque	N-m	1,2	3 ~ 100	3 times the Rated Output Torque				
Rated Input Speed	rpm	1,2	3 ~ 100	4,000	4,000	3,500		
Max. Input Speed	rpm	1,2	3 ~ 100	8,000	6,000	6,000		
Backlash	arcmin	1	3 ~ 10	20-25				
	arcmin	2	16 ~ 100	25-30				
Torsional Rigidity	N-m/arcmin	1,2	3 ~ 100	2.3	2.3	15		
Max. Radial Force	N	1,2	3 ~ 100	320	550	1,600		
Max. Axial Force	N	1,2	3 ~ 100	280	500	1,350		
Service Life	hr	1,2	3 ~ 100	>20,000				
Efficiency	%	1	3 ~ 10	96	96	96		
		2	16 ~ 100	94	94	94		
Operating Temperature		1,2	3 ~ 100	- 20 °C ~ +90 °C				
Lubrication		1,2	3 ~ 100	Synthetic Grease				
Protection Class		1,2	3 ~ 100	IP65				
Mounting Position		1,2	3 ~ 100	Any				
Noise Level	dB	1	3 ~ 10	≤70	≤70	≤75		
		2	16 ~ 100	≤70	≤70	≤75		
Weight ±2%	kg	1		1.8	3.2	14		
		2		2.1	4.2	16		
Mass Moment of Inertia	kg.cm2	1	3	0.135	0.48	3.21		
			4	0.093	0.38	2.64		
			5	0.078	0.38	2.64		
			7	0.13	0.38	2.62		
			10	0.13	0.35	2.51		
		2	16	0.13	0.41	2.64		
			20~40	0.13	0.38	2.64		
			50~100	0.13	0.38	2.51		

Dimensions

WPL090 1-stage:ECMA-C11010RS :

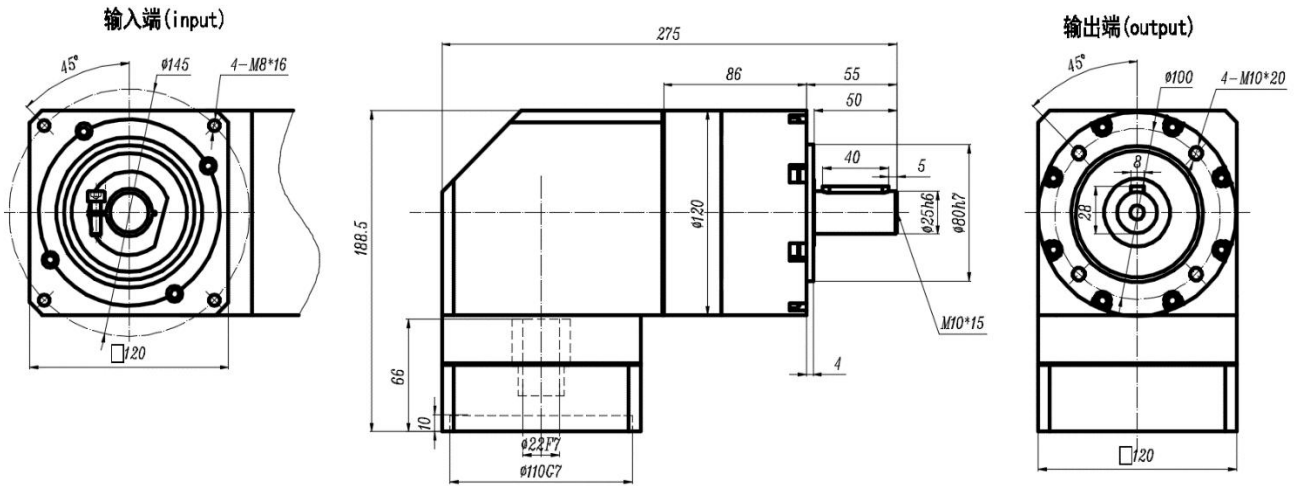


WPL090 2-stage:ECMA-C11010RS



Dimensions

WPL120 1-stage: Motor: ECMA-E11310RS, ECMA-E11315RS, ECMA-E11320RS



WPL120 2-stage: Motor: ECMA-E11310RS, ECMA-E11315RS, ECMA-E11320RS

