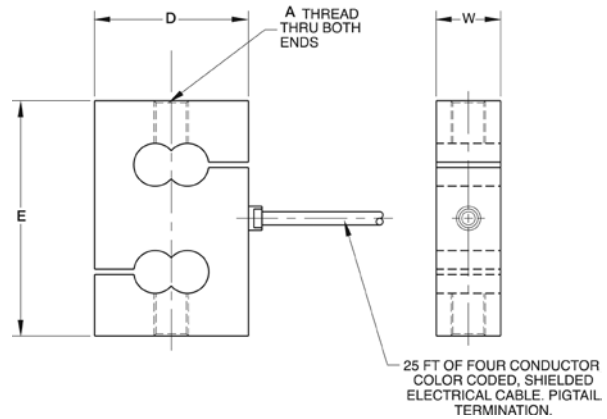


RSC S-Beam Stainless Steel NTEP 1:3000 Class III Single Cell



Picture is a representation of actual product



SPECIFICATIONS

Full Scale Output:
2.0mV/V

Output Resistance:
350 ohms +/- 3

Input Resistance:
>385

Material/Finish:
Stainless steel

Temperature:
Compensated range
14°F to 104°F/-10°C to 40°C

Safe Overload:
150% Full scale

Rated Excitation:
10V DC

Nonlinearity:
0.03% Full scale

Hysteresis:
0.03% Full scale

Insulation Resistance:
5000 megohms

Seal Type:
Environmentally sealed

Cable Length:
25 ft/7.6 m

Cable Diameter:
.190 polyurethane jacket

Cable Color Code:
Green + Excitation
Black..... - Excitation
White + Signal
Red - Signal
Yellow Shield

Warranty:
One-year limited warranty

Approvals:



DIMENSIONS

RATED CAPACITY	A	B	D	E
lb/inches				
50-300	3/8-24	0.59	2.00	2.44
500-3000	1/2-20	0.94	2.25	3.44
5000	3/4-16	1.19	2.75	3.94
10,000	3/4-16	1.44	3.00	3.94
kg/mm				
22.7-136.1	3/8-24	15.0	50.8	62.0
226.8-4535.9	1/2-20	23.9	57.2	87.4
2268.0	3/4-16	30.2	69.9	100.1
4535.9	3/4-16	36.6	76.2	100.1

ORDER INFORMATION

LOAD RATING		PART #	PRICE
100 lb	(45.4 kg)	21900	\$325.00
200 lb	(90.7 kg)	21901	325.00
300 lb	(136.1 kg)	21902	325.00
500 lb	(226.8 kg)	21903	325.00
750 lb	(340.2 kg)	21904	325.00
1000 lb	(453.6 kg)	21905	325.00
2000 lb	(907.2 kg)	21906	325.00
3000 lb	(1360.8 kg)	21907	370.00
5000 lb	(2268.0 kg)	21908	425.00
Non-NTEP			
50 lb	(22.7 kg)	21899	325.00
10,000 lb	(4535.9 kg)	21909	465.00

NTEP 1:10,000 Class III Single Cell available; consult factory for pricing.

WEIGH MODULE AVAILABLE

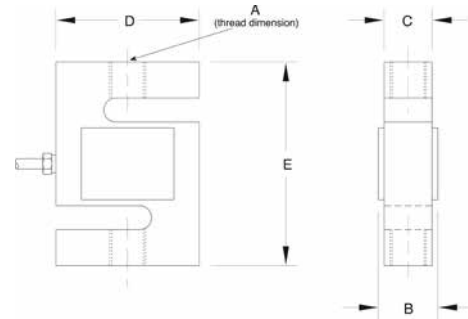
MANUFACTURER	MODEL	PAGE #
Rice Lake Weighing Systems	ITCM Isolated Tension Cell Mount	44

Central Carolina Scale Inc
 5393 Farrell Rd
 Sanford NC 27330
 Call: 919-776-7737
 Email: info@ccscale.com

S35 S-Beam Stainless Steel NTEP 1:3000 Class III 3S/1:10,000 Class III L 10S, IP67



Picture is a representation of actual product



SPECIFICATIONS

Full Scale Output:

3.0 mV/V nominal

Output Resistance:

350 ohms +/- 3.5

Input Resistance:

430 ohms +/- 60

Material/Finish:

Stainless steel

Temperature:

Compensated range
14°F to 104°F/-10°C to 40°C

Safe Overload:

150%

Rated Excitation:

10V DC (15V maximum)

Combined Error:

0.03%

Insulation Resistance:

10,000 megohms

Deflection at Capacity:

.010 in/.25 mm

Seal Type:

Environmentally sealed, IP67

Cable Length:

20 ft/6.1 m

Cable Diameter:

.190 polyurethane jacket

Cable Color Code:

Red+ Excitation
Black.....- Excitation
Green+ Signal
White- Signal
Yellow Shield

Warranty:

One-year limited warranty

Approvals:



DIMENSIONS

RATED CAPACITY	A	B	C	D	E
lb/inches					
100-300	1/4-28 UNF-2B	.65	.46	2.00	2.40
500-1000	1/2-20 UNF-2B	.90	.71	2.00	2.40
2000-2500	1/2-20 UNF-2B	1.15	.96	2.00	2.40
3000	1/2-20 UNF-2B	1.15	.96	3.00	3.90
5000-10,000	3/4-16 UNF-2B	1.15	.96	3.00	3.90
15,000	1-14 UNF-2B	1.69	1.50	4.00	5.50
20,000	1 1/4-12 UNF-2B	2.19	2.00	5.00	7.00
kg/mm					
45.4-136.1	1/4-28 UNF-2B	16.5	11.7	50.8	60.9
226.8-453.6	1/2-20 UNF-2B	22.9	18.0	50.8	60.9
907.2-1134	1/2-20 UNF-2B	29.2	24.4	50.8	60.9
1360.8	1/2-20 UNF-2B	29.2	24.4	76.2	99.1
2268-4535.9	3/4-16 UNF-2B	29.2	24.4	76.2	99.1
6803.9	1-14 UNF-2B	42.9	38.1	101.6	139.7
9071.9	1 1/4-12 UNF-2B	55.6	50.8	127.0	177.8

ORDER INFORMATION

LOAD RATING	PART #	PRICE
100 lb (45.4 kg)	64859	\$275.00
200 lb (90.7 kg)	64860	275.00
300 lb (136.1 kg)	64861	275.00
500 lb (226.8 kg)	64862	275.00
750 lb (340.2 kg)	64863	275.00
1,000 lb (453.6 kg)	64864	275.00
2,000 lb (907.2 kg)	64865	275.00
2,500 lb (1134.0 kg)	64866	275.00

ORDER INFORMATION CONTINUED

LOAD RATING	PART #	PRICE
3,000 lb (1360.8 kg)	64867	\$275.00
5,000 lb (2268.0 kg)	64868	475.00
10,000 lb (4535.9 kg)	64869	550.00
15,000 lb (6803.9 kg)	64870	795.00
20,000 lb (9071.8 kg)	64871	895.00

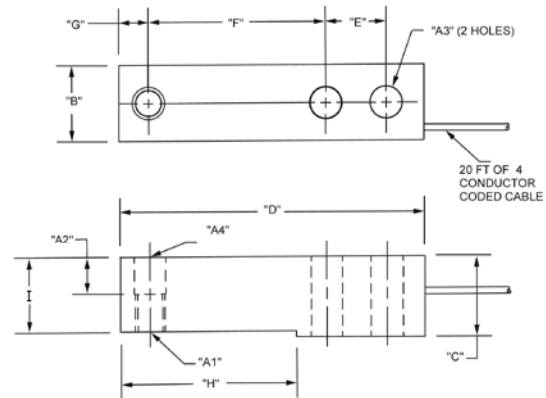
WEIGH MODULE AVAILABLE

MANUFACTURER	MODEL	PAGE #
Diep Lake Weighing Systems	ITCM Isolated Tension Cell Mount	44

H35 Single-Ended Beam Stainless Steel NTEP 1:5000 Class III Multiple Cell, Welded-seal, IP67



Picture is a representation of actual product



SPECIFICATIONS

Full Scale Output:
3.0mV/V

Output Resistance:
350 ohms +/- 3

Input Resistance:
>350

Material/Finish:
Stainless steel

Temperature:
Compensated range
14°F to 104°F/-10°C to 40°C

Safe Overload:
150% Full scale

Safe Sideload:
100% Full scale

Rated Excitation:
10V DC (15V maximum)

Nonlinearity:
0.03% Full scale

Hysteresis:
0.03% Full scale

Insulation Resistance:
5000 megohms

Seal Type:
Welded-seal, IP67

Cable Length:
20 ft/6.1 m

Cable Diameter:
.190 polyurethane jacket

Cable Color Code:

- Green+ Excitation
- Black.....- Excitation
- White+ Signal
- Red- Signal
- Yellow Shield

Warranty:

One-year limited warranty

Approvals:



DIMENSIONS

RATED CAPACITY	A1	A2	A3	A4	B	C	D	E	F	G	H	I
lb/inches												
500-5000	1/2-20 UNF-2B	.62	.53	.53	1.21	1.19	5.12	1.00	3.00	.50	2.85	1.120
kg/mm												
453.6-2268	1/2-20 UNF-2B	15.8	13.5	13.5	30.7	30.2	130.05	25.4	76.2	12.7	72.4	28.4

ORDER INFORMATION

LOAD RATING		PART #	PRICE
500 lb	(226.8 kg)	84818	\$365.00
1,000 lb	(453.6 kg)	64876	365.00
2,500 lb	(1134.0 kg)	64877	365.00
4,000 lb	(1814.4 kg)	64878	365.00
5,000 lb	(2268.0 kg)	64879	365.00

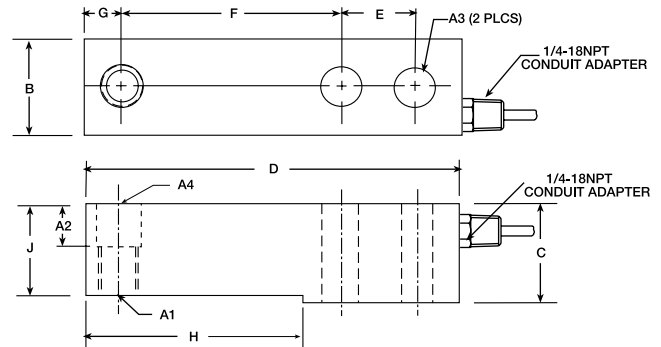
INTERCHANGEABLE PRODUCTS

MANUFACTURER	PART #
Mettler Toledo	
500 lb-8 ft cable	TB601019-008
1,000 lb-20 ft cable	TB601016-020
2,500 lb-8 ft cable	TB601016-008
4,000 lb-20 ft cable	TB601017-020
5,000 lb-8 ft cable	TB601018-008

B35 Single-Ended Beam Stainless Steel, IP67 NTEP 1:5000 Class III Multiple Cell



Picture is a representation of actual product



SPECIFICATIONS

Full Scale Output:

3.0 mV/V nominal

Output Resistance:

350 ohms +/- 3

Input Resistance:

>350

Material/Finish:

Stainless steel

Temperature:

Compensated range
14°F to 104°F/-10°C to 40°C

Safe Overload:

150% Full scale

Safe Sideload:

100% Full scale

Rated Excitation:

10V DC (15V maximum)

Combined Error:

0.04%

Insulation Resistance:

5000 megohms

Deflection at Capacity:

.010 in/.25 mm

Seal Type:

Environmentally sealed, IP67

Cable Length:

20 ft/6.1 m

Cable Diameter:

.190 polyurethane jacket

Cable Color Code:

Red+ Excitation
Black.....- Excitation
Green.....+ Signal
White.....- Signal
Yellow..... Shield

Warranty:

One-year limited warranty

Approvals:


DIMENSIONS

RATED CAPACITY	A1	A2	A3	A4	B	C	D	E	F	G	H	J
lb/inches												
250-500	1/2-20 UNF-2B	.50	.53	.53	1.21	1.00	5.12	1.00	3.00	.50	2.85	.93
1000-4000	1/2-20 UNF-2B	.62	.53	.53	1.21	1.19	5.12	1.00	3.00	.50	2.85	1.12
5000-10,000	3/4-16 UNF-2B	.75	.78	.78	1.44	1.44	6.75	1.50	3.75	.75	3.75	1.34
kg/mm												
226.8	1/2-20 UNF-2B	12.7	13.5	13.5	30.7	25.4	130.0	25.4	76.2	12.7	72.4	23.6
453.6-1814.4	1/2-20 UNF-2B	15.7	13.5	13.5	30.7	30.2	130.0	25.4	26.2	12.7	72.4	28.4
2268.0-4535.9	3/4-16 UNF-2B	19.1	19.1	19.8	36.6	36.6	171.5	38.1	95.3	19.1	95.3	34.0

ORDER INFORMATION

LOAD RATING	PART #	PRICE
*250 lb (113.4 kg)	94364	\$295.00
500 lb (226.8 kg)	46486	295.00
1000 lb (453.6 kg)	46487	295.00
2000 lb (907.2 kg)	46488	295.00
2500 lb (1134.0 kg)	46489	295.00
3000 lb (1360.8 kg)	46490	295.00
4000 lb (1814.4 kg)	46491	295.00
5000 lb (2268.0 kg)	46492	395.00
10,000 lb (4535.9 kg)	46493	395.00

*Non-NTEP

INTERCHANGEABLE PRODUCTS

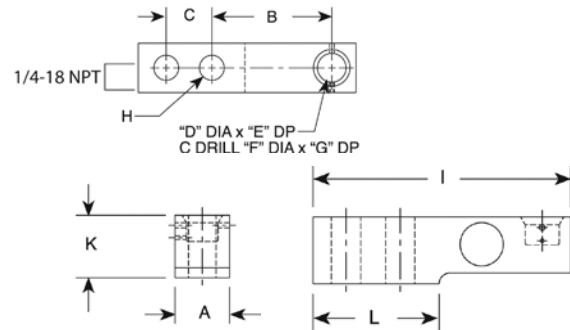
MANUFACTURER	MODEL	PAGE #
Rice Lake Weighing Systems	RL35023S	130
Vishay Revere Transducers	9123	265
Mettler Toledo® 500 lb	TB600830-020	-
Mettler Toledo® 1000 lb	TB600831-020	-
Mettler Toledo® 2000 lb	TB600832-020	-
Mettler Toledo® 2500 lb	TB600833-020	-

HBM THC* Single-Ended Beam Stainless Steel Welded-seal, IP68 NTEP 1:5000 Class III Multiple



500 lb model

Picture is a representation of actual product



*HLC-Counterbore threaded

SPECIFICATIONS

Full Scale Output:
2.0 mV/V

Output Resistance:
350 ohms +/- 3

Input Resistance:
>350

Material/Finish:
Stainless steel

Temperature:
Compensated range
14°F to 104°F/-10°C to 40°C

Safe Overload:
150% Full scale

Safe Sideload:
100% Full scale

Rated Excitation:
10V DC (15V maximum)

Combined Error:
0.03%

Non-repeatability:
0.01% Full scale

Insulation Resistance:
5000 megohms

Seal Type:
Welded-seal, IP68

Cable Length:
30 ft/9.1 m
15 ft/6.1 m (4000 lb)

Cable Diameter:
.190 polyurethane jacket

Cable Color Code:

Green+ Excitation
Black- Excitation
White+ Signal
Red- Signal
Yellow Shield

Warranty:

One-year limited warranty

Approvals:



DIMENSIONS

RATED CAPACITY	A	B	C	D	E	F	G	H	I	K	L
lb/inches											
500-4,000	1.20	3.00	1.00	.63	.69	.88	.189	.500	5.25	1.22	2.27
5,000	1.46	3.00	1.00	.63	.92	.88	.38	.500	5.38	1.40	2.28
10,000	1.68	3.75	1.50	.88	1.06	1.38	.44	.750	6.87	1.68	3.03
kg/mm											
226.8 - 1814.2	30.5	76.2	25.4	16.0	17.5	22.4	4.8	12.7	133.3	30.9	57.6
2268	37.1	76.2	25.4	16.0	23.4	22.4	9.7	12.7	136.7	35.5	57.9
4536	42.7	95.3	38.1	22.4	29.7	35.1	11.8	19.1	174.5	42.6	76.9

ORDER INFORMATION

LOAD RATING	PART #	PRICE
500 lb (226.8 kg)	69999	\$450.00
1,250 lb (567.0 kg)	70002	450.00
2,500 lb (1,134 kg)	70005	450.00
*4,000 lb (1,814.4 kg)	70008	450.00
5,000 lb (2,268 kg)	70009	575.00
10,000 lb (4,536 kg)	70014	695.00

*Model HTC in 4000 lb capacity

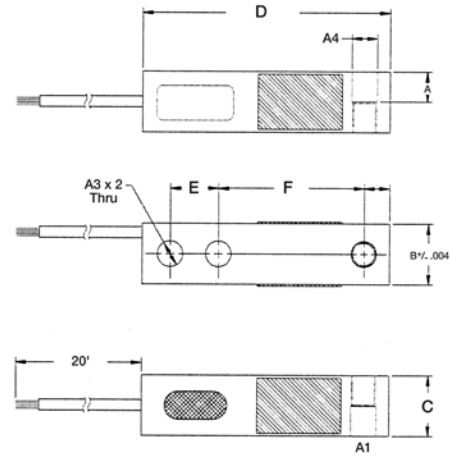
INTERCHANGEABLE PRODUCTS

MANUFACTURER	PART #
Mettler-Toledo®	TB600529-500 lb
Mettler-Toledo	TB600363-1250 lb
Mettler-Toledo	TB600342-2500 lb
Mettler-Toledo	TB600261-4000 lb
Mettler-Toledo	TB600343-5000 lb
Mettler-Toledo	TB600364-10000 lb
Rice Lake Weighing Systems	RL30745

A35 Single-Ended Beam Alloy Steel NTEP 1:5000 Class III Multiple Cell



Picture is a representation of actual product



SPECIFICATIONS

Full Scale Output:

3.0 mv/v

Output Resistance:

350 ohms +/- 2

Input Resistance:

>350

Material/Finish:

4340 Alloy steel, nickel plated

Temperature:

Compensated range
14°F to 104°F/-10°C to 40°C

Safe Overload:

150% Full scale

Safe Sideload:

100% Full scale

Rated Excitation:

10V DC (15V maximum)

Insulation Resistance:

5000 megohms

Combined Error:

.03% of FS

Deflection at Capacity:

0.03 in

Seal Type:

Environmentally sealed IP67

Cable Length:

20 ft/6.1 m

Cable Diameter:

.190 polyurethane jacket

Cable Color Code:

Red+ Excitation
Black.....- Excitation
Green+ Signal
White- Signal
Yellow Shield

Warranty:

One-year limited warranty

Approvals:


DIMENSIONS

RATED CAPACITY	A1	A	A3	A4	B	C	D	E	F	G
lb/inches										
500	1/2-20 UNF	.50	.53	.53	1.00	1.25	5.12	1.00	3.00	.53
1000-5000 SE	1/2-20 UNF	.62	.53	.53	1.25	1.25	5.12	1.00	3.00	.53
kg/mm										
226.8	1/2-20 UNF	12.7	13.5	13.5	25.4	31.8	130.1	25.4	76.2	13.5
453.6-2059.35 SE	1/2-20 UNF	15.8	13.5	13.5	31.8	31.8	130.1	25.4	76.2	13.5

ORDER INFORMATION

LOAD RATING		PART #	PRICE
500 lb	(226.8 kg)	98292	\$275.00
1000 lb	(453.6 kg)	98293	275.00
2000 lb	(907.2 kg)	98294	275.00
2500 lb	(1134.0 kg)	98295	275.00
3000 lb	(1360.8 kg)	98296	275.00
4000 lb	(1814.4 kg)	98297	275.00
5000 lb SE	(2268.0 kg)	98298	275.00

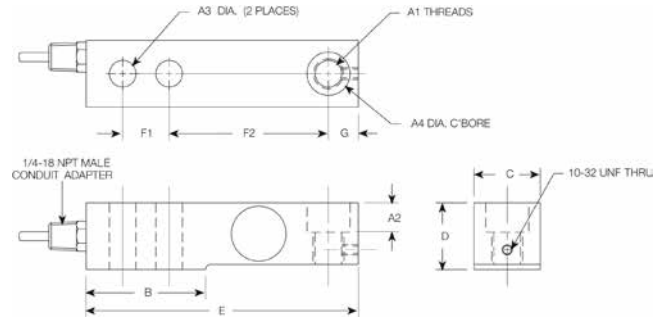
INTERCHANGEABLE PRODUCTS

MANUFACTURER	MODEL	PAGE #
Rice Lake Weighing Systems	RL35023	129
Vishay-Sensortronics	65023	299
Vishay-Celtron	SQB	198

BLC Single-Ended Beam Stainless Steel NTEP 1:5000 Class III Multiple Cell*



Picture is a representation of actual product



SPECIFICATIONS

Full Scale Output:
3.0mV/V nominal

Output Resistance:
1000 ohms +/- 10

Input Resistance:
1000 ohms

Material/Finish:
Stainless steel

Temperature:
Compensated range
14°F to 104°F/-10°C to 40°C

Safe Overload:
150% Full scale

Safe Sideload:
100% Full scale

Rated Excitation:
10V DC (15V maximum)

Nonlinearity:
0.03% Full scale

Hysteresis:
0.05% Full scale

Insulation Resistance:
5000 megohms

Deflection at Capacity:
500-4000 lb=.010 in/.25 mm,
5000-10,000 lb=.012 in/.30 mm

Seal Type:
Environmentally sealed

Cable Length:
500-4000 lb=10 ft/3.1 m,
5000-10,000 lb=20 ft/6.1 m

Cable Diameter:
.190 polyurethane jacket

Cable Color Code:
Green+ Excitation
Black.....+ Excitation
White+ Signal
Red- Signal
Yellow Shield

Warranty:
One-year limited warranty



DIMENSIONS

RATED CAPACITY	A1	A2	A3	A4	B	C	D	E	F1	F2	G
lb/inches											
500-4000	1/2-20 UNF-2B	.56	.52	.81	2.27	1.21	1.19	5.25	1.00	3.00	.60
5000	3/4-16 UNF-2B	.79	.78	1.19	3.00	1.45	1.44	6.75	1.50	3.75	.75
10,000	3/4-16 UNF-2B	.79	.78	1.19	3.00	1.69	1.69	6.75	1.50	3.75	.75
kg/mm											
226.8-1814.4	1/2-20 UNF-2B	14.2	13.2	20.6	57.6	30.7	30.2	133.3	25.4	76.2	15.2
2268.0	3/4-16 UNF-2B	20.1	19.8	30.2	76.2	36.8	36.6	171.5	38.1	95.3	19.1
4535.9	3/4-16 UNF-2B	20.1	19.8	30.2	76.2	42.9	42.9	171.5	38.1	95.3	19.1

ORDER INFORMATION

LOAD RATING		PART #	PRICE
NTEP* With Counter Bore			
500 lb	(226.8 kg)	84817	\$425.00
1000 lb	(453.6 kg)	21514	395.00
2500 lb	(1134.0 kg)	21504	395.00
4000 lb	(1814.4 kg)	21515	395.00
5000 lb	(2268.0 kg)	21505	495.00
10,000 lb	(4535.9 kg)	21506	595.00
Non-NTEP Without Counter Bore			
1000 lb	(453.6 kg)	17226	395.00
2500 lb	(1134.0 kg)	17227	395.00
4000 lb	(1814.4 kg)	17228	395.00
5000 lb	(2268.0 kg)	17229	495.00
10,000 lb	(4535.9 kg)	17230	595.00
Bushing (for conversion to non-counter bore)			
500 lb-4000 lb, SST		17691	8.00

*NTEP certified to 50% of rated capacity

ORDER INFORMATION CONTINUED

LOAD RATING		PART #	PRICE
NTEP* Without Counter Bore			
500 lb	(226.8 kg)	84816	\$425.00
1000 lb	(453.6 kg)	63028	395.00
2500 lb	(1134.0 kg)	63029	395.00
4000 lb	(1814.4 kg)	63030	395.00
5000 lb	(2268.0 kg)	63031	495.00
10,000 lb	(4535.9 kg)	63032	595.00

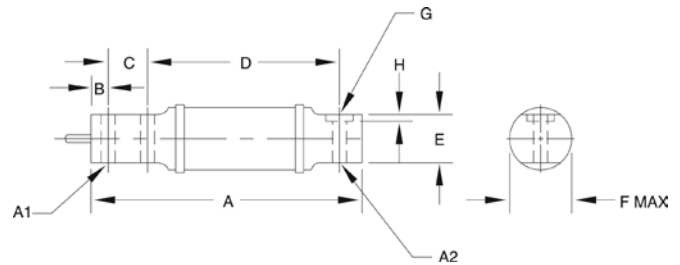
INTERCHANGEABLE PRODUCTS

MANUFACTURER	MODEL	PAGE #
Rice Lake Weighing Systems	RLBLC**	128

BBS Single-Ended Beam Alloy Steel



Picture is a representation of actual product



SPECIFICATIONS

Full Scale Output:

2.0 mV/V

Output Resistance:

50-1000 lb = 750 ohms +/- 15
25000 lb = 347 ohms +/- 3

Input Resistance:

375 ohms +/- 10

Material/Finish:

High-alloy steel, nickel plated

Temperature:

Compensated range
0°F to 150°F/-18°C to 65°C

Safe Overload:

150% Full scale

Safe Sideload:

50% Full scale

Rated Excitation:

10V DC (15V maximum)

Nonlinearity:

0.03% Full scale

Hysteresis:

0.03% Full scale

Insulation Resistance:

1000 megohms

Deflection at Capacity:

50 lb = .015 in/.38 mm,
100 lb = .025 in/.64 mm,
200-250 lb = .030 in/.76 mm,
500 lb = .020 in/.51 mm,
1000 lb = .040 in/1.02 mm,
2500 lb = .120 in/3.05 mm

Seal Type:

Environmentally sealed

Cable Length:

10 ft/3.1 m

Cable Diameter:

.190 polyurethane jacket

Cable Color Code:

Green+ Excitation
Black.....- Excitation
White+ Signal
Red- Signal
Yellow Shield

Warranty:

One-year limited warranty

Approvals:


DIMENSIONS

RATED CAPACITY	A	A1	A2	B	C	D	E	F	G	H
lb/inches										
50-100	6.00	.31	.31	.38	.88	4.25	1.06	1.25	—	—
200-1000	6.63	.51	.51	.50	1.12	4.25	1.06	1.25	—	—
2500	11.38	.51	.62	.50	1.75	8.25	1.25	2.00	1.19	0.012
kg/mm										
22.7-45.4	152.4	7.9	7.9	9.7	22.4	108.0	26.9	31.75	—	—
90.7-453.6	168.4	13.0	13.0	12.7	28.5	108.0	26.9	31.75	—	—
1134.0	289.1	13.0	15.8	12.7	44.5	210.0	31.8	50.8	30.2	0.30

ORDER INFORMATION

LOAD RATING	PART #	PRICE
50 lb (22.7 kg)	17352	\$550.00
100 lb (45.4 kg)	17353	550.00
200 lb (90.7 kg)	17354	550.00
250 lb (113.4 kg)	17355	550.00
500 lb (226.8 kg)	17356	550.00
1000 lb (453.6 kg)	17357	550.00
2500 lb (1134.0 kg)	17358	1,195.00

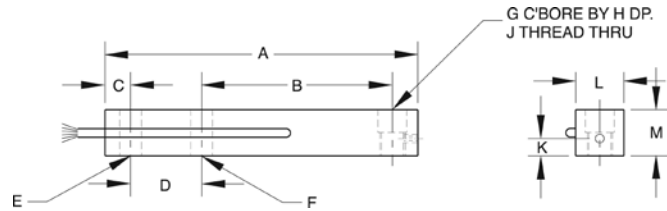
INTERCHANGEABLE PRODUCTS

MANUFACTURER	MODEL	PAGE #
Rice Lake Weighing Systems	RL40BBS	143
Vishay Sensortronics	60007	—
Vishay BLH	LBG1	—
Fairbanks®	3-481XX-1, 3-486XX-1	—

BLF Single-Ended Beam Stainless Steel



Picture is a representation of actual product



SPECIFICATIONS

Full Scale Output:

2.0mV/V

Bridge Resistance:

1000 ohms, nominal

Material/Finish:

Stainless steel

Temperature:

Compensated range
15°F to 130°F/-9°C to 54°C

Manufacturer Model Number:

BLF-XX-15100

Safe Overload:

150% Full scale

Safe Sideload:

100% Full scale

Rated Excitation:

10V DC (15V maximum)

Nonlinearity:

0.03% Full scale

Hysteresis:

0.02% Full scale

Insulation Resistance:

10,000 megohms

Seal Type:

Environmentally sealed

Cable Length:

15 ft/4.6 m

Cable Diameter:

.190 polyurethane jacket

Cable Color Code:

Green + Excitation
Black - Excitation
White + Signal
Red - Signal
Yellow Shield

Warranty:

One-year limited warranty

Approvals:


DIMENSIONS

RATED CAPACITY	A	B	C	D	E	F	G	H	J	K	L	M
lb/inches												
2500	9.00	6.00	.62	1.75	.59	.53	.69	.56	5/8-18 UNF	.31	1.19	1.13
5000	10.00	6.25	1.00	2.00	.84	.78	.94	.50	7/8-14 UNF	.50	1.44	1.44
kg/mm												
680.4-1134.0	228.6	152.4	15.8	44.5	14.9	13.5	17.5	14.2	5/8-18 UNF	7.9	30.2	28.7
2268.0	254.0	158.8	19.1	50.8	21.3	19.8	23.9	12.7	7/8-14 UNF	12.7	36.6	36.6

ORDER INFORMATION

LOAD RATING	PART #	PRICE
2500 lb (1134.0 kg)	17114	\$595.00
5000 lb (2268.0 kg)	21917	725.00
*Load Cup	69400	35.00
Locking Screw	14929	1.00

*2500 lb only

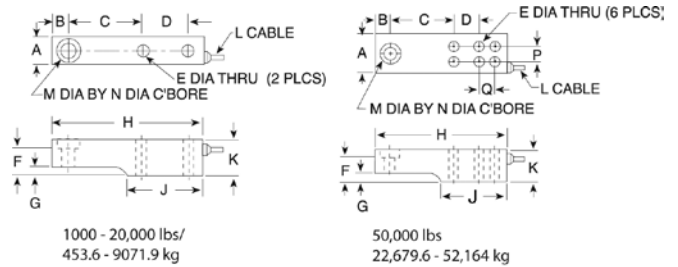
INTERCHANGEABLE PRODUCTS

MANUFACTURER	MODEL
Fairbanks®	3-53581-X, 3-52921-1

SB3 Single-Ended Beam Alloy Steel



Picture is a representation of actual product



SPECIFICATIONS

<p>Full Scale Output: 2.0 mV/V</p> <p>Output Resistance: 350 ohms +/- 1.5</p> <p>Input Resistance: 385</p> <p>Material/Finish: High-alloy steel, nickel plated</p> <p>Temperature: Compensated range 0°F to 150°F/-18°C to 65°C</p>	<p>Safe Overload: 150% Full scale</p> <p>Safe Sideload: 100% Full scale</p> <p>Rated Excitation: 10V DC (15V maximum)</p> <p>Nonlinearity: 0.03% Full scale</p> <p>Hysteresis: 0.02% Full scale</p> <p>Insulation Resistance: 10000 megohms</p>	<p>Deflection at Capacity: 1000 lb=.010 in/.25 mm, 2000 lb=.012 in/.30 mm, 5000 lb=.014 in/.36 mm, 10,000 lb=.018 in/.46 mm, 20,000 lb=.028 in/.71 mm, 50,000 lb=.040 in/1.02 mm, 100,000 lb=.060 in/1.52 mm</p> <p>Seal Type: Environmentally sealed</p> <p>Cable Length: As per "L" on chart above</p>	<p>Cable Diameter: .190 polyurethane jacket</p> <p>Cable Color Code: Green+ Excitation Black- Excitation White+ Signal Red- Signal Yellow Shield</p> <p>Warranty: One-year limited warranty</p> <p>Approvals: </p>
------------------------------------------------------------------------------------------------------------------------------------------------------------------------------------------------------------------------------------------------------------------------------------------------	-------------------------------------------------------------------------------------------------------------------------------------------------------------------------------------------------------------------------------------------------------------------------------------------------------------------	-------------------------------------------------------------------------------------------------------------------------------------------------------------------------------------------------------------------------------------------------------------------------------------------------------------------------------------------------------------------	--------------------------------------------------------------------------------------------------------------------------------------------------------------------------------------------------------------------------------------------------------------------------------------------------------------

DIMENSIONS

RATED CAPACITY	# MNTG HOLES	A	B	C	D	E	F	G	H	J	K	L	M	N	P/Q
lb/inches															
1000-5000	2	1.44	.88	3.87	2.50	.52	1.41	.44	8.00	4.00	1.88	10'	.68	1.19	—
10,000	2	1.88	.93	4.87	2.62	.88	2.12	.88	9.25	4.63	2.75	15'	1.00	1.63	—
20,000	2	2.38	1.25	5.50	3.25	1.06	2.31	.75	11.00	5.50	3.25	15'	1.25	2.01	—
50,000	6	3.75	1.75	7.12	3.00	.88	XXXX	1.44	14.75	7.38	4.62	35'	1.75	2.89	2.00
100,000	6	3.75	1.88	7.75	3.62	1.06	4.38	1.62	16.38	8.25	5.62	35'	.67	2.58	2.12
kg/mm															
453.6-2268.0	2	36.6	22.4	98.3	63.5	13.2	35.8	11.2	203.2	101.6	47.8	3.1m	17.3	30.2	—
4535.9	2	47.8	23.6	123.7	66.6	22.4	53.9	22.4	235.0	117.6	69.9	4.6m	25.4	41.4	—
9071.9	2	60.5	31.8	139.7	82.6	26.9	58.6	19.1	279.4	139.7	82.6	4.6m	31.8	51.1	—
22,679.6	6	95.3	44.5	180.9	76.2	22.4	86.6	36.6	374.7	187.5	117.4	10.7m	44.5	73.4	50.8
45,359.2-52,164	6	95.3	47.8	196.9	92.0	26.9	111.3	41.1	416.1	209.6	142.8	10.7m	17.00	65.5	53.9

ORDER INFORMATION

LOAD RATING	PART #	PRICE
1000 lb (453.6 kg)	17116	\$1,095.00
2000 lb (909.2 kg)	17117	1,095.00
5000 lb (2268.0 kg)	17118	1,095.00
10,000 lb (4535.9 kg)	17119	1,395.00
20,000 lb (9071.9 kg)	17120	1,595.00
50,000 lb (22,679.6 kg)	17121	3,095.00
100,000 lb (45,359.2 kg)	17122	3,795.00

INTERCHANGEABLE PRODUCTS

MANUFACTURER	MODEL	PAGE #
Rice Lake Weighing Systems	RLSSB	135
Revere Transducers	SSB	271
Howe Richardson®	37608XX	—

WEIGH MODULE AVAILABLE

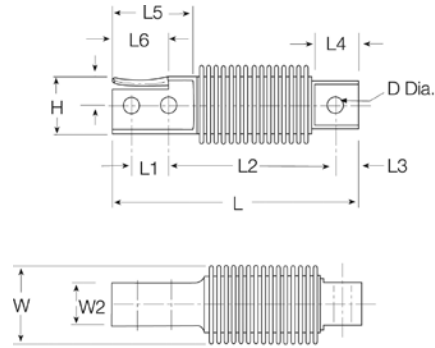
MANUFACTURER	MODEL	PAGE #
Rice Lake Weighing Systems	RL1900 Series	62

(1000 lb-10,000 lb capacities)

Z6 Single-Ended Beam Stainless Steel Welded-seal, IP68, OIML C3



Picture is a representation of actual product



SPECIFICATIONS

<p>Full Scale Output: 2.0mV/V</p> <p>Output Resistance: 356 ohms +/- 0.12</p> <p>Input Resistance: 350-400</p> <p>Material/Finish: Stainless steel</p> <p>Temperature: Compensated range 14°F to 104°F/-10°C to 40°C</p>	<p>Safe Overload: 150% Full scale</p> <p>Rated Excitation: 10V DC (15V maximum)</p> <p>Combined Error: 0.05% Full scale</p> <p>Insulation Resistance: 5000 megohms</p> <p>Seal Type: Welded-seal, IP68</p>	<p>Cable Length: 10 ft/3.1 m</p> <p>Cable Diameter: .190 PVC jacket</p> <p>Cable Color Code: Blue+ Excitation Black.....- Excitation White+ Signal Red- Signal Green+ Sen Grey- Sen Clear Shield</p>	<p>Warranty: One-year limited warranty</p> <p>Approvals: </p>
-------------------------------------------------------------------------------------------------------------------------------------------------------------------------------------------------------------------------------------------------------------------------------------	-------------------------------------------------------------------------------------------------------------------------------------------------------------------------------------------------------------------------------------------------------------------	---------------------------------------------------------------------------------------------------------------------------------------------------------------------------------------------------------------------------------------------------------------------------------------------------	--------------------------------------------------------------------------------------

DIMENSIONS

RATED CAPACITY	H	H1	L	L1	L2	L3	L4	L5	L6	W	W2	D
lb/inches												
11-441.0	1.22	0.32	4.84	0.71	3.23	0.39	0.82	1.77	1.10	1.65	0.79	0.32
kg/mm												
5-200	31.0	8.1	123.0	18.0	82.0	9.9	21.0	45.0	27.9	42.0	20.1	8.20

ORDER INFORMATION

LOAD RATING	PART #	PRICE
5 kg (*11 lb)	36172	\$575.00
10 kg (22.0 lb)	36173	575.00
20 kg (44.1 lb)	36174	575.00
50 kg (110.2 lb)	36175	575.00
100 kg (220.5 lb)	36176	575.00
200 kg (441.0 lb)	36177	575.00

*D1 accuracy class

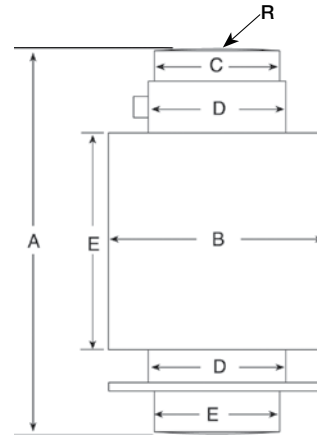
INTERCHANGEABLE PRODUCTS

MANUFACTURER	MODEL	PAGE #
Rice Lake Weighing Systems	RLHBB	144
Vishay Celtron	HBB	202
Vishay Revere Transducers	SHB	270
Vishay Tedeá-Huntleigh	355	327

C16 Rocker Column Pin Stainless Steel Hermetically sealed, IP68, NTEP 1:10,000 Class IIIL Multiple Cell/OIML



Picture is a representation of actual product



SPECIFICATIONS

Full Scale Output:
2 mV/V ± 1%

Output Resistance:
706 ohms +/- 3.5

Input Resistance:
700 ohms +/- 20

Material/Finish:
Stainless steel

Temperature:
Compensated range
14°F to 104°F/-10°C to 40°C

Safe Overload:
130% Full scale

Rated Excitation:
10V DC (15V maximum)

Combined Error:
0.03%

Insulation Resistance:
5000 megohms

Seal Type:
Hermetically sealed, IP68

Cable Length:
12 m

Cable Diameter:
.190 polyurethane jacket

Cable Color Code:
White+ Signal
Black- Excitation
Blue+ Excitation
Gray- Sense
Red- Signal
Yellow Shield
Green+ Sense

Warranty:
One-year limited warranty

Approvals:



DIMENSIONS

RATED CAPACITY	A	B	C	D	E	R
t/mm						
20	150.0	76.1	44.0	48.0	44.0	130.0
30	150.0	76.1	44.0	48.0	44.0	160.0
40	150.0	76.1	44.0	48.0	44.0	180.0
60t	210.0	76.1	44.0	48.0	44.0	220.0
t/inches						
20	5.90	3.00	1.73	1.89	1.73	5.11
30	5.90	3.00	1.73	1.89	1.73	6.30
40	5.90	3.00	1.73	1.89	1.73	7.08
60t	8.27	3.00	1.73	1.89	1.73	8.66

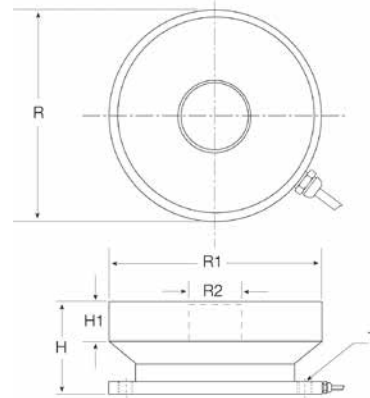
ORDER INFORMATION

LOAD RATING	PART #	PRICE
OIML		
20 t	69312	\$850.00
30 t	69313	850.00
40 t	69314	850.00
60t	125266	925.00
NTEP		
20 t	106149	850.00
30 t	106150	850.00
40 t	106151	850.00
60t	125265	925.00

JRT Torsion Ring Transducer Alloy Steel/Stainless Steel NTEP 1:10,000 Class III L Multiple Cell



Picture is a representation of actual product



SPECIFICATIONS

Full Scale Output:

2.0 mV/V

Output Resistance:

700 ohms +/- 5

Input Resistance:

750 ohms

Material/Finish:

Alloy steel, stainless steel
(part # 76698)

Temperature:

Compensated range
14°F to 113°F/-10°C to 45°C

Safe Overload:

150% Full scale

Rated Excitation:

10V AC/DC

Combined Error:

0.03% Full scale

Insulation Resistance:

5000 megohms

Seal Type:

Environmentally sealed

Cable Length:

35 ft/10.7 m, 75 ft/22.8 m
(stainless steel only)

Cable Diameter:

.190 polyurethane jacket

Cable Color Code:

Green + Excitation
Black - Excitation
White + Signal
Red - Signal
Yellow Shield

Warranty:

One-year limited warranty

Approvals:


DIMENSIONS

RATED CAPACITY	H	H1	R	R1	R2	T
lb/inches						
20,000	2.00	.75	4.50	4.42	1.00	3/8-24 UNF
50,000	2.50	1.00	5.50	5.42	1.50	7/16-20 UNF
100,000	2.63	1.13	5.50	5.42	1.50	7/16-20 UNF
kg/mm						
9071.9	50.8	19.1	114.3	112.3	25.4	3/8-24 UNF
22,679.6	63.5	25.4	139.7	137.7	38.1	7/16-20 UNF
45,359.2	66.8	28.7	139.7	137.7	38.1	7/16-20 UNF

ORDER INFORMATION

LOAD RATING	PART #	PRICE
Alloy Steel-NTEP 1:10000		
50,000 lb (22,679.6 kg)	36179	\$1,395.00
100,000 lb (45,359.2 kg)	36180	1,495.00
Alloy Steel-Non-NTEP		
20,000 lb (9071.9 kg)	36178	1,295.00
Stainless Steel-Non-NTEP with spark gap*		
100,000 lb (45,359.2 kg)	76698	2,095.00

*RLWS or HBM does not guarantee complete immunity to potential damage caused by lightning or welding

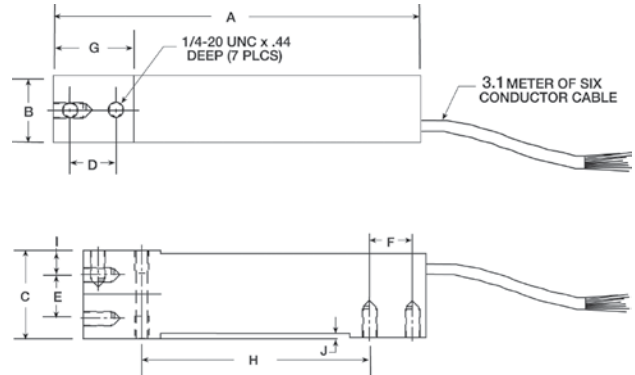
WEIGH MODULE AVAILABLE

MANUFACTURER	MODEL	PAGE #
Rice Lake Weighing Systems	TWM	—

SP4 Single Point Aluminum NTEP 1:5000 Class III Single Cell



Picture is a representation of actual product



SPECIFICATIONS

Full Scale Output: 2.0mV/V	Safe Overload: 150% Full scale
Output Resistance: 350 ohms +/- 3	Rated Excitation: 10V DC (15V maximum)
Input Resistance: 350 min	Combined Error: 0.02% Full scale
Material/Finish: Anodized Aluminum	Insulation Resistance: 5000 megohms
Temperature: Compensated range 14°F to 104°F/-10°C to 40°C	Deflection at Capacity: 5-100 kg ≤ .015 in/0.4 mm
	Seal Type: Environmentally sealed

Cable Length: 10 ft/3.1 m	Warranty: One-year limited warranty
Cable Diameter: .190 PVC jacket	Approvals: FM APPROVED, NTEP, CE
Cable Color Code: Blue + Excitation Black - Excitation Green + Sense Grey - Sense White + Signal Red - Signal Yellow Shield	

DIMENSIONS

RATED CAPACITY	A	B	C	D	E	F	G	H	I	J
kg/mm										
7-100	150.3	25.4	39.9	19.1	19.1	19.1	33.8	99.6	11.4	2.4
lb/inches										
15.4-220.5	5.92	1.0	1.57	.75	.75	.75	1.33	3.92	.45	.093

ORDER INFORMATION

LOAD RATING	PART #	PRICE	
(7 kg)	15.4 lb	72764	\$180.00
(10 kg)	22.1 lb	72765	180.00
(15 kg)	33.1 lb	72767	180.00
(20 kg)	44.1 lb	72769	180.00
(30 kg)	66.2 lb	72771	180.00
(50 kg)	110.2 lb	72776	180.00
(75 kg)	165.3 lb	72777	180.00
(100 kg)	220.5 lb	72778	180.00

INTERCHANGEABLE PRODUCTS

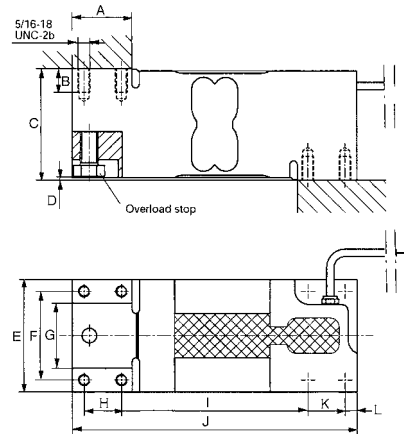
MANUFACTURER	MODEL	PAGE #
*Rice Lake Weighing Systems	RLSP4	170
Rice Lake Weighing Systems	RL1042	173
Vishay Tedea-Huntleigh	1042	331

*Color code is different

PW12 Single Point Aluminum IP67, NTEP 1:5000 Class III Single Cell



Picture is a representation of actual product



SPECIFICATIONS

Full Scale Output:
2.0mV/V

Output Resistance:
330-430 ohms

Input Resistance:
300-500 ohms

Material/Finish:
Aluminum

Temperature:
Compensated range
14°F to 104°F/-10°C to 40°C

Safe Overload:
150% Full scale

Rated Excitation:
10V DC (15V maximum)

Total Error:
0.02% Full scale

Insulation Resistance:
1000 megohms

Seal Type:
Environmentally sealed, IP67

Cable Length:
10 ft/3.1 m

Cable Diameter:
.190 PVC jacket

Cable Color Code:
Blue+ Excitation
Black.....- Excitation
Green+ Sense
Grey- Sense
White+ Signal
Red- Signal

Warranty:
One-year limited warranty

Approvals:

 Available upon request

DIMENSIONS

RATED CAPACITY	A	B	C	D	E	F	G	H	I	J	K	L
lb/inches												
110.2-2205.0	1.57	.62	2.95	.05	2.99	2.36	1.73	.98	4.92	7.51	.98	.31
kg/mm												
50-1000	40	16	75	1.5	76	60	44	25	125	191	25	8

ORDER INFORMATION

LOAD RATING		PART #	PRICE
50 kg	(110.2 lb)	76041	\$275.00
75 kg	(165.4 lb)	76042	275.00
100 kg	(220.5 lb)	76040	275.00
150 kg	(330.7 lb)	76043	275.00
200 kg	(440.9 lb)	76044	275.00
250 kg	(551.2 lb)	76045	275.00
300 kg	(661.4 lb)	76046	275.00
500 kg	(1102.3 lb)	76047	275.00
635 kg	(1400.1 lb)	76048	275.00
1000 kg	(2205.0 lb)	76049	275.00

INTERCHANGEABLE PRODUCTS

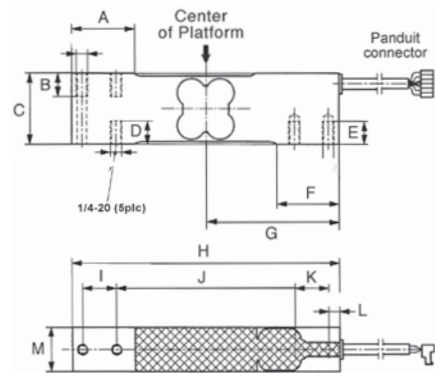
MANUFACTURER	MODEL	PAGE #
*Rice Lake Weighing Systems	RLPWM12	171
Rice Lake Weighing Systems	RL1250	179
Vishay Tedeia-Huntleigh	1250	343

*Color code is different

PW15 Single Point Stainless Steel IP67 1:5000 Class III Single Cell



Picture is a representation of actual product



SPECIFICATIONS

Full Scale Output:
2.0 mV/V

Output Resistance:
359 ohms +/- 5

Input Resistance:
380 +/- 15

Material/Finish:
Stainless steel

Temperature:
Compensated range
14°F to 104°F/-10°C to 40°C

Safe Overload:
150% Full scale

Rated Excitation:
10V DC (15V maximum)

Total Error:
0.02% Full scale

Insulation Resistance:
1000 megohms

Seal Type:
Environmentally sealed

Cable Length:
10 ft/ 3.1 m

Cable Diameter:
.190 PVC jacket

Cable Color Code:
Blue+ Excitation
Black.....- Excitation
Green+ Sense
Grey- Sense
White+ Signal
Red- Signal

Warranty:
One-year limited warranty

Approvals:

Available upon request

DIMENSIONS

RATED CAPACITY	A	B	C	D	E	F	G	H	I	J	K	L	M
lb/inches													
22.1-220.5	1.37	.51	1.57	.51	.51	1.37	2.95	5.90	.74	3.93	.74	.24	.98
kg/mm													
10-100	35	13	40	13	13	35	75	150	19	100	19	6.2	25

ORDER INFORMATION

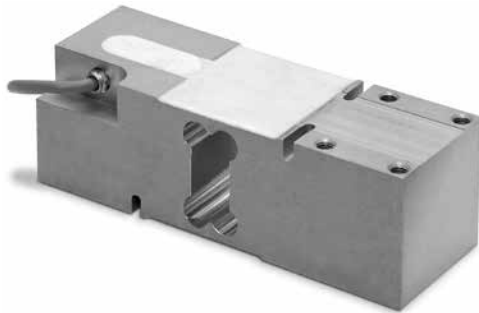
LOAD RATING	PART #	PRICE	
(10 kg)	22.1 lb	76769	\$295.00
(15 kg)	33.1 lb	76771	295.00
(20 kg)	44.1 lb	76772	295.00
(30 kg)	66.2 lb	76773	295.00
(50 kg)	110.3 lb	76774	295.00
(75 kg)	165.3 lb	76775	295.00
(100 kg)	220.5 lb	76776	295.00
(150 kg)	330.7 lb	84820	295.00

INTERCHANGEABLE PRODUCTS

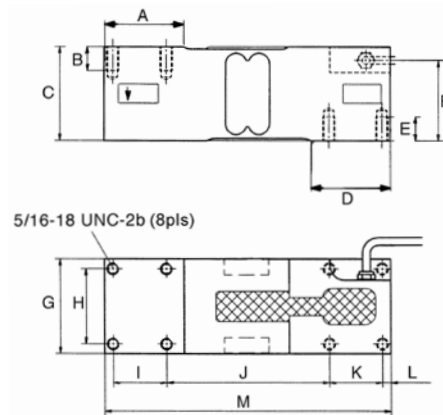
MANUFACTURER	MODEL	PAGE #
Rice Lake Weighing Systems	RLPWM15	166

*Color code is different

PW16 Single Point Aluminum IP67, NTEP 1:5000 Class III Single Cell



Picture is a representation of actual product



SPECIFICATIONS

Full Scale Output: 2.0mV/V	Safe Overload: 150% Full scale
Output Resistance: 300-500 ohms	Rated Excitation: 10V DC (15V maximum)
Input Resistance: 300-500 ohms	Total Error: 0.02% Full scale
Material/Finish: Aluminum	Insulation Resistance: 2000 megohms
Temperature: Compensated range 14°F to 104°F/-10°C to 40°C	Seal Type: Environmentally sealed, IP67

Cable Length: 10 ft/3.1 m	Warranty: One-year limited warranty
Cable Diameter: .100 PVC jacket	Approvals:
Cable Color Code:	 Available upon request
Blue+ Excitation	
Black.....- Excitation	
Green+ Sense	
Grey- Sense	
White+ Signal	
Red- Signal	

DIMENSIONS

RATED CAPACITY	A	B	C	D	E	F	G	H	I	J	K	L	M
lb/inches													
66.1-1401.1	2.04	.62	2.45	2.36	.62	2.05	2.48	1.96	1.37	4.21	1.37	.21	7.40
kg/mm													
30-635	52	16	62.3	60	16	52.3	63	50	35	107	35	5.5	188

ORDER INFORMATION

LOAD RATING		PART #	PRICE
(30 kg)	**66.1 lb	76083	\$250.00
(50 kg)	110.2lb	76084	250.00
(75 kg)	165.4lb	76085	250.00
(100 kg)	220.5lb	76086	250.00
(150 kg)	330.7 lb	76087	250.00
(200 kg)	440.9 lb	76088	250.00
(250 kg)	551.2 lb	76089	250.00
(300 kg)	661.4 lb	76090	250.00
(500 kg)	1102.3 lb	76091	250.00
(635 kg)	1401.1 lb	76092	250.00

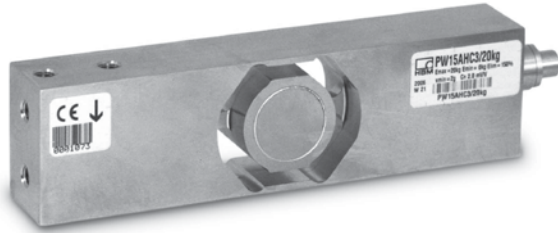
**Non NTEP

INTERCHANGEABLE PRODUCTS

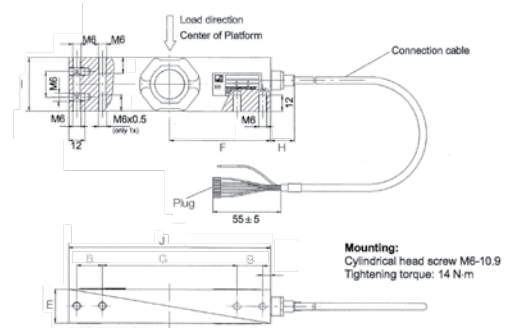
MANUFACTURER	MODEL	PAGE #
*Rice Lake Weighing Systems	RLPWM16	172
Rice Lake Weighing Systems	RL1260	178
Vishay Tedeo-Huntleigh	1260	340

*Color code is different

PW15AH Single Point Stainless Steel IP69K, Hermetically sealed, NTEP 1:5000 Class III Single Cell



Picture is a representation of actual product



SPECIFICATIONS

Full Scale Output: 2.0 mV/V	Safe Overload: 150% Full scale	Cable Length: 10 ft/3.1 m	Warranty: One-year limited warranty
Output Resistance: 350 ohms +/- 10	Rated Excitation: 10V DC (15V maximum)	Cable Diameter: .212 PVC jacket	Approvals: Available upon request
Input Resistance: 380 ohms +/- 15	Total Error: 0.02% Full scale	Cable Color Code: Blue+ Excitation Black.....- Excitation Green.....+ Sense Grey.....- Sense White.....+ Signal Red.....- Signal	
Material/Finish: Stainless steel	Insulation Resistance: 1000 megohms		
Temperature: Compensated range 14°F to 104°F/-10°C to 40°C	Seal Type: Hermetically sealed, IP69K		

DIMENSIONS

RATED CAPACITY	B	E	F	G	H	I	J	K
lb/inches								
22/220.5	.75	.98	2.95	3.94	.69	1.57	5.91	.75
kg/mm								
10-100	19	25	75	100	17.5	40	150	19

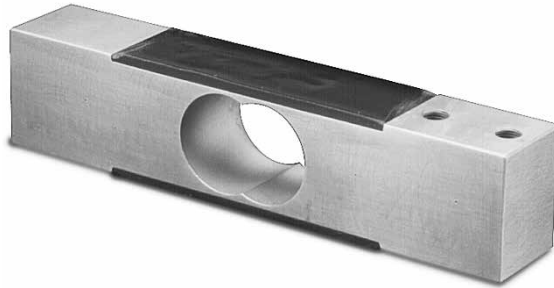
ORDER INFORMATION

LOAD RATING		PART #	PRICE
(10 kg)	22.0 lb	101915	\$595.00
(20 kg)	44.1 lb	101916	595.00
(50 kg)	110.2 lb	101917	595.00
(100 kg)	220.5 lb	101918	595.00

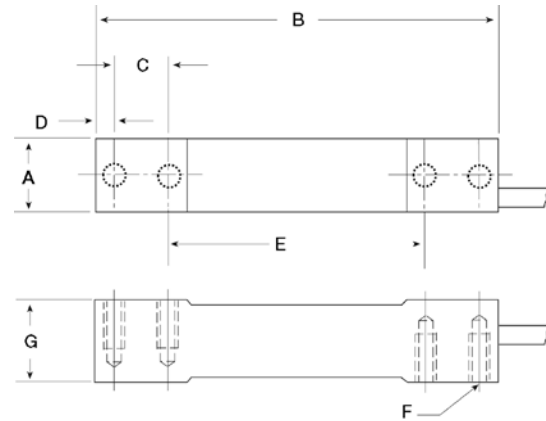
INTERCHANGEABLE PRODUCTS

MANUFACTURER	MODEL	PAGE #
Rice Lake Weighing Systems	RLPWM15	166

PWS/PWSM Single Point Stainless Steel NTEP 1:3000 Class III Single Cell, OIML C3, IP67



Picture is a representation of actual product



SPECIFICATIONS

Full Scale Output:

2.0 mV/V

Output Resistance:

350 ohms +/- 3

Input Resistance:

350

Material/Finish:

Stainless steel

Temperature:

Compensated range
14°F to 104°F/-10°C to 40°C

Safe Overload:

150% Full scale

Rated Excitation:

10V DC (15V maximum)

Combined Error:

0.03% Full scale

Insulation Resistance:

1000 megohms

Seal Type:

Environmentally sealed, IP67

Cable Length:

10 ft/3.1 m

Cable Diameter:

.190 polyurethane jacket

Cable Color Code:

Green+ Excitation
Black- Excitation
White+ Signal
Red- Signal
Yellow Shield

Deflection:

< .4 mm FS

Warranty:

One-year limited warranty

Approvals:


DIMENSIONS

RATED CAPACITY	A	B	C	D	E	F	G
kg/mm							
7-15	30.2	139.7	19.1	6.4	88.9	1/4-20 UNC	19.1
30-60	30.2	139.7	19.1	6.4	88.9	1/4-20 UNC	23.9
100-150	30.2	139.7	22.3	7.8	79.2	3/8-16 UNC	30.7
lb/inches							
15.4-33.1	1.19	5.50	.75	.25	3.50	1/4-20 UNC	.75
66.1-132.3	1.19	5.50	.75	.25	3.50	1/4-20 UNC	.94
220.5-330.7	1.19	5.50	.88	.31	3.12	3/8-16 UNC	1.21

ORDER INFORMATION

LOAD RATING	PART #	PRICE
PWS NTEP 1:3000		
(7 kg)	15.4 lb	36185
(10 kg)	22.0 lb	36186
(15 kg)	33.1 lb	36187
(30 kg)	66.1 lb	36188
(60 kg)	132.3 lb	36189
(100 kg)	220.5 lb	68551
(150 kg)	330.7 lb	69345

*Metric threads M6 x 1.00

INTERCHANGEABLE PRODUCTS

MANUFACTURER	MODEL	PAGE #
Rice Lake Weighing Systems	RL1380*	176